

Town of East Hampton
Energy & Light Advisory Committee
159 Pantigo Road
East Hampton, NY 11937



East Hampton is initiating a “dark skies” policy and ordinance in order to conserve energy and protect the Town’s nighttime environment. See link: <http://www.town.east-hampton.ny.us>

What is Light Pollution? Sky Glow? Light Trespass?

*How to protect our night sky,
our environment,
and our quality of life.*

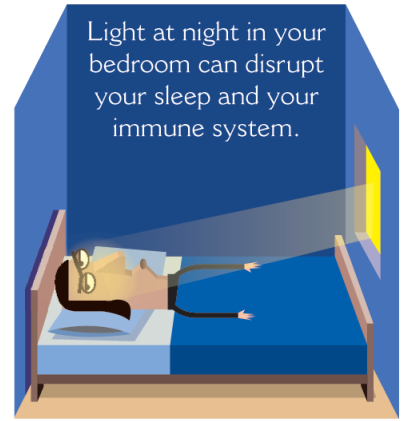
**How much money can YOU save
by reducing light pollution?**

**Did you know that the Milky Way
is visible to only 1/3 of the world’s population
due to Light Pollution?**





Glare from unshielded lights can interfere with night vision for pedestrians and drivers, as well as boaters trying to see maritime navigational lights.



LIGHT POLLUTION is caused by misdirected, unshielded, excessive, or unnecessary night lighting. Results:

SKYGLOW blocks our view of the starry skies

GLARE blinds drivers, boaters, and pedestrians

LIGHT TRESPASS annoys neighbors

DISRUPTED ECO-SYSTEMS affect the natural cycles of plants and animals

ENERGY EXCESS wastes money and pollutes our environment.



LIGHT POLLUTION costs Americans an estimated \$4.5 billion per year in wasted electrical energy, consuming millions of barrels of oil and millions of tons of coal, releasing millions of tons of pollutants into the air. Wasted light is expensive in many ways. We pay the price with unhealthy air, water, and land, with increased taxes on our municipal bills, and inflated costs for consumer products and services.

SECURITY LIGHTING

All-night lighting may feel like “security” but will not provide protection by itself, and it can indicate that you are not home. Two indoor lamps on independent timers, or an alarm system can work better to deter criminals. Use a motion sensor only if someone is around to see the lights come on. Vandalism and graffiti are more likely in lit and deserted areas. Glare can create deep shadows where people can hide, and glare obscures vision.



Save Money, Protect the Night Sky, and Be a Good Neighbor, too.



Most Light Pollution comes from 150-500 watt floodlights, aimed outward and left on all night, costing at least \$225 per year in electricity. These lights often disturb our neighbors and light up the night sky with “sky glow”, obscuring the stars.

Rate of 16.37 cents per kWh is based on 2004 average residential LIPA bill in Suffolk.
Courtesy Citizens Advisory Panel: <http://www.energymatters.org/>

Make these changes and SAVE \$\$ EVERY YEAR*:

1. Point your spot and floodlights toward the ground and turn off at 10 pm. (Be a better neighbor: check for light trespass)
SAVING over \$150 per year - 66%
2. Cut the watts. Brighter is not necessarily better. 40-watt porch lights and 45 watt floodlights are usually sufficient to see at night and save energy.
SAVING over \$175 per year - 77%
3. Attach a motion sensor. (one hour per night)
SAVING over \$212 per year - 94%
4. Replace with a shielded fixture, which directs the light downward using 1/3 less energy and protects the Night Sky.
Shielded Fixtures: <http://www.darksky.org/fixtures/fixtures.html>
SAVING over \$221 per year - 98%



Use Energy Smart “compact fluorescent” light bulbs for EVERYTHING!
Additional 75% SAVINGS and 1/5 as many light bulbs
Remember to buy 1/4 the watts for the same light output.
Commercial lighting guidelines are available in the Planning Department.



* Cost Calculator: <http://www.selene-ny.org/lightcost.asp>

The night is full of plants and animals that depend on darkness for a healthy habitat.

“The stars guide our way, when we migrate at night.”



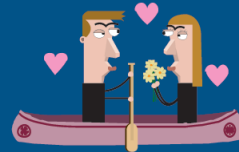
“I can see in the dark, thank you”



“Trees need to sleep at night”

“The blight of urban sky glow stops children from wishing on stars, and lovers from counting them. Light pollution severs our human connection to the beautiful celestial creatures of the night.”

—Dava Sobel, author of *Galileo's Daughter*



In your local library for kids:
There Once Was A Sky Full of Stars

Illustrations: Karen Fredericks
Design: JV Advertising & Design 4/04